

## // Telefónica Onlife Graduate Programme ✕

# Trainee Optimisation & Parameterisation (m/f)

- >> We're on the hunt for exceptional graduates to join us on our 12 month Onlife Graduate Programme and will hire you for an unlimited contract. If you've got an outstanding business idea and/or you want to flex your entrepreneurial spirit to help us reshape the digital world, we want to hear from you.
- >> Your Home Department: **Networks**
- >> Your Location: **Munich or Dusseldorf**

## // Your new role ✕

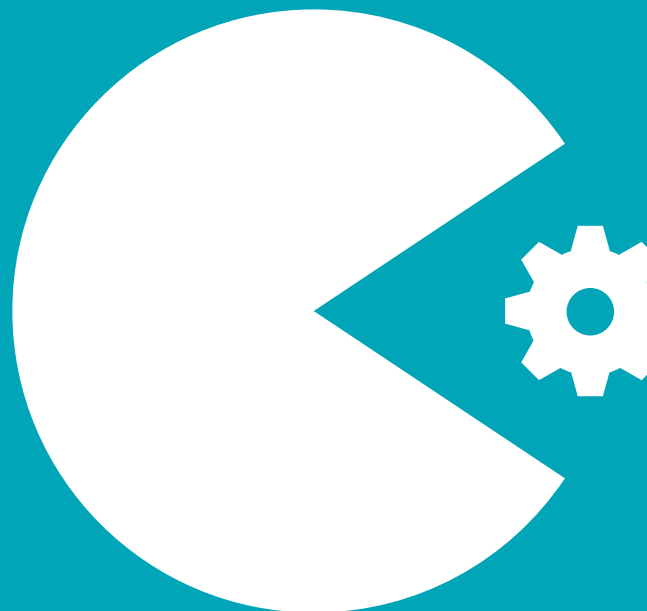
- >> You will work closely with our central Optimisation & Parameterisation team and gain experience in the optimisation of Telefónica's multi-technology network with leading edge tools and methods.
  - Develop optimisation methods in co-operation with our stakeholders
  - Identify incident and failure pattern, analyse, develop and communicate improvement measures
  - Support incident and failure analysis together with other departments like network operation, core engineering and other radio access groups
  - Identify and specify opportunities for optimisation solutions and develop your own ideas
  - Work with our international team to identify data sources and analyse the data as needed
  - Design and run your own optimisation projects from use case to deployment
  - Share knowledge in a growing community of analytics specialists and telecommunication scientists
- >> Next to your tasks in your department, you will work one day per week on your start-up idea in the Onlife Graduate team.

## // What you offer us ✕

- >> – A Bachelor or Master degree in Telecommunications, IT, or comparable plus not more than one year work experience after your last degree
- Wide knowledge and experience of using data mining, analytics and visualisation tools
- Proactivity in identifying areas where processes and systems can be improved
- A desire to improve and deliver high-value solutions in a fast-paced, complex environment
- Advanced organisational skills with a positive #YouCanDo attitude
- A wealth of digital skills as well as a business mindset
- Strategic, analytical and entrepreneurial thinking
- An agile and enabling attitude with the ability to problem-solve and build bridges
- A social and collaborative working style and competitive attitude
- Fluency in English and German

## // Lead the charge. Become an Onlife Graduate. ✕

- >> Find out more now.  
[www.onlifegraduates.de](http://www.onlifegraduates.de)



# Programme phases & activities

